



Give us a call and we'll barge in!

Gold Coast Barges- Vessel Information Sheet "Kirra"

Vessel Name: Kirra

Registration: 40003QD

Maximum Persons: 10

Engine: High Thrust Twin Yamaha 44kW (60hp)

Dimensions:

Length: 6m

Beam: 4m

Height above waterline: 500mm

Lifting Lugs: yes

Additional Equipment:

- Moon pool (large enough for 2t mooring block)
- Winch - certified to 2t
- Crane - certified to 1t
- Mooring Lifting Frame- certified to 2t

Suitable for:

- Work platform
- Staff and equipment logistics
- Pushing platforms or dumb barges.
- Bridge maintenance,
- Safety vessel,
- Mooring placement and inspections

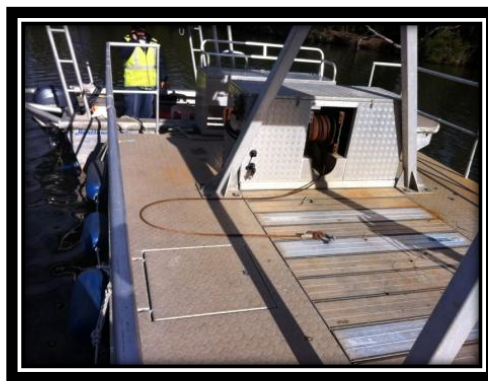
1 tonne crane in use:



Lifting frame, winch and moonpool for moorings:



Large opening/moon pool - or flat deck:



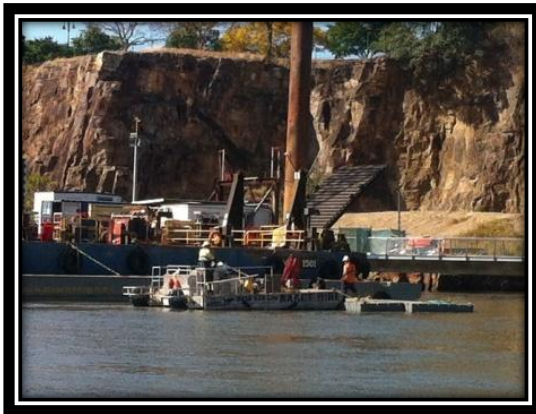
Kirra is an AMSA approved vessel. It is commercially registered and carries on board Safety Management System which instructs the skipper on. We supply required documentation including:

- Safety Management System (emergency procedures, use of safety equipment on board, drills, safe vessel operations)
- Ship's logs, which are mandatory in commercial watercraft. This schedules and records safety drills and vessel maintenance and procedures.

Wet Hire, where we provide an experienced skipper to ensure your safety and the vessel's best practice.

Dry Hire, providing the hirer is approved and employs a skipper with correct tickets. We provide induction training in operating the vessel and understanding the SMS and required record keeping.

- ✓ Fully insured.
- ✓ Can be dry hired or wet hired
- ✓ Can provide ticketed, experienced skipper
- ✓ Commercially registered work punt
- ✓ All safety equipment and required paperwork



Kirra working in the Brisbane river as a support vessel for a major construction project . She is a versatile, manoeuvrable stable vessel for a wide variety of applications.